

Chapter 15

Quality Assurance

Chapter Overview

Section 15A The Analytical Perspective—Revisited

Section 15B Quality Control

Section 15C Quality Assessment

Section 15D Evaluating Quality Assurance Data

Section 15E Key Terms

Section 15F Summary

Section 15G Problems

Section 15H Solutions to Practice Exercises

In Chapter 14 we discussed the process of developing a standard method, including optimizing the experimental procedure, verifying that the method produces acceptable precision and accuracy in the hands of a signal analyst, and validating the method for general use by the broader analytical community. Knowing that a method meets suitable standards is important if we are to have confidence in our results. Even so, using a standard method does not guarantee that the result of an analysis is acceptable. In this chapter we introduce the quality assurance procedures used in industry and government labs for monitoring routine chemical analyses.

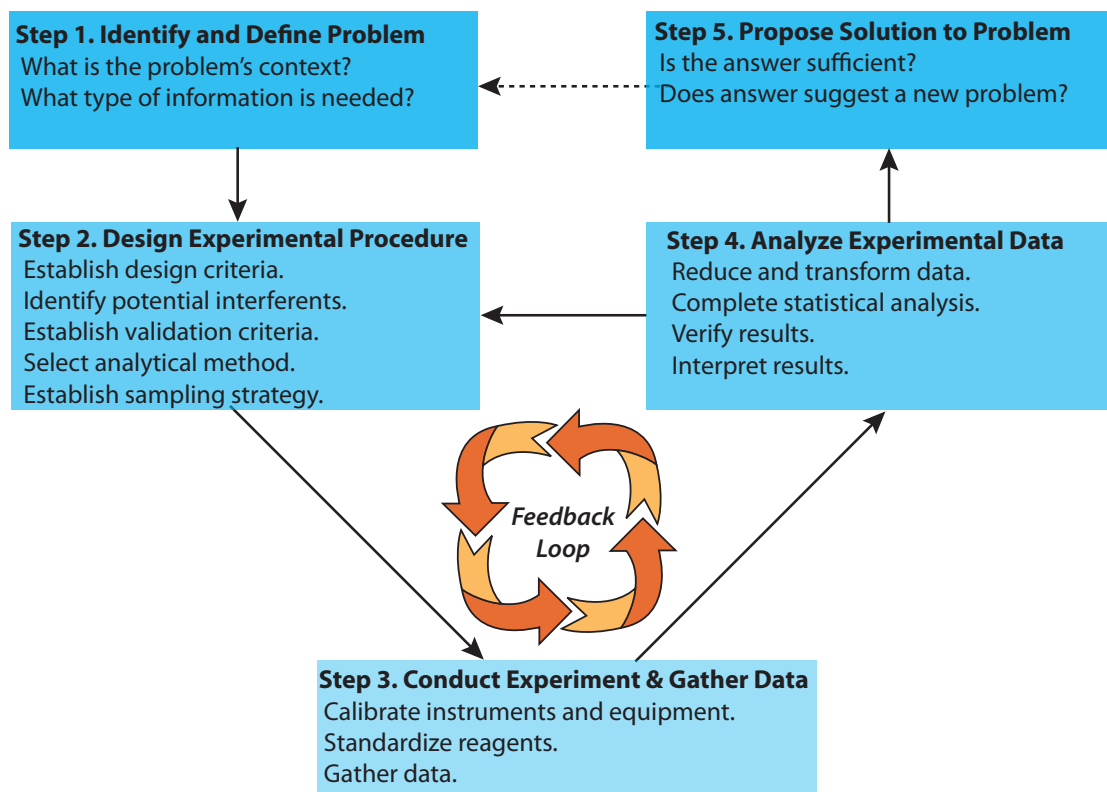


Figure 15.1 Flow diagram showing one view of the analytical approach to solving problems. This diagram is modified after Atkinson, G. F. *J. Chem. Educ.* **1982**, *59*, 201–202.

15A The Analytical Perspective—Revisited

Figure 15.1 is the same as [Figure 1.3](#). You may wish to review our earlier discussion of this figure and of the [analytical approach to solving problem](#).

As we noted in Chapter 1, each area of chemistry brings a unique perspective to the broader discipline of chemistry. For analytical chemistry this perspective is as an approach to solving problem, one representation of which is shown in Figure 15.1.

If you examine the procedure for a standard method it appears, it often seems that its development was a straightforward process of moving from a problem to a solution. Unfortunately—or, perhaps, fortunately for those who consider themselves to be analytical chemists!—developing a standard method is seldom routine. Even a well-established standard method, carefully followed, can yield poor data.

An important feature of the analytical approach outlined in Figure 15.1 is the feedback loop involving steps 2, 3, and 4, in which the outcome of one step may lead us to reevaluate the other steps. For example, after standardizing a spectrophotometric method for the analysis of iron (step 3), we may find that its sensitivity does not meet the original design criteria (step 2). In response, we might choose a different method, change the original design criteria, or improve the sensitivity.

The feedback loop in Figure 15.1 is maintained by a quality assurance program, whose objective is to control systematic and random sources of

error.¹ The underlying assumption of a quality assurance program is that results obtained when an analysis is under **STATISTICAL CONTROL** are free of bias and are characterized by well-defined confidence intervals. When used properly, a quality assurance program identifies the practices necessary to bring a system into statistical control, allows us to determine if the system remains in statistical control, and suggests a course of corrective action if the system falls out of statistical control.

The focus of this chapter is on the two principal components of a **QUALITY ASSURANCE PROGRAM**: quality control and quality assessment. In addition, considerable attention is given to the use of control charts for routinely monitoring the quality of analytical data.

15B Quality Control

QUALITY CONTROL encompasses all activities that bring an analysis into statistical control. The most important facet of quality control is a set of written directives describing the relevant laboratory-specific, technique-specific, sample-specific, method-specific, and protocol-specific operations. **GOOD LABORATORY PRACTICES** (GLPs) describe the general laboratory operations that we must follow in any analysis. These practices include properly recording data and maintaining records, using chain-of-custody forms for samples, specifying and purifying chemical reagents, preparing commonly used reagents, cleaning and calibrating glassware, training laboratory personnel, and maintaining the laboratory facilities and general laboratory equipment.

GOOD MEASUREMENT PRACTICES (GMPs) describe operations specific to a technique. In general, GMPs provide instructions for maintaining, calibrating, and using equipment and instrumentation. For example, a GMP for a titration describes how to calibrate the buret (if required), how to fill the buret with titrant, the correct way to read the volume of titrant in the buret, and the correct way to dispense the titrant.

The directions for analyzing a specific analyte in a specific matrix are described by a **STANDARD OPERATIONS PROCEDURE** (SOP). The SOP indicates how we process the sample in the laboratory, how we separate the analyte from potential interferents, how we standardize the method, how we measure the analytical signal, how we transform the data into the desired result, and how we use the quality assessment tools to maintain quality control. If the laboratory is responsible for sampling, then the SOP will also states how we are to collect, process, and preserve the sample in the field. An SOP may be developed and used by a single laboratory, or it may be a standard procedure approved by an organization such as the American Society for

An analysis is in a state of statistical control when it is reproducible and free from bias.

For one example of quality control, see Keith, L. H.; Crummett, W.; Deegan, J., Jr.; Libby, R. A.; Taylor, J. K.; Wentler, G. "Principles of Environmental Analysis," *Anal. Chem.* **1983**, *55*, 2210–2218. This article describes guidelines developed by the Subcommittee on Environmental Analytical Chemistry, a subcommittee of the American Chemical Society's Committee on Environmental Improvement.

¹ (a) Taylor, J. K. *Anal. Chem.* **1981**, *53*, 1588A–1596A; (b) Taylor, J. K. *Anal. Chem.* **1983**, *55*, 600A–608A; (c) Taylor, J. K. *Am. Lab* October 1985, *53*, 67–75; (d) Nadkarni, R. A. *Anal. Chem.* **1991**, *63*, 675A–682A; (e) Valcárcel, M.; Ríos, A. *Trends Anal. Chem.* **1994**, *13*, 17–23.

Testing Materials or the Federal Food and Drug Administration. A typical SOP is provided in the following example.

Example 15.1

Provide an SOP for the determination of cadmium in lake sediments using atomic absorption spectroscopy and a normal calibration curve.

SOLUTION

Collect sediment samples using a bottom grab sampler and store them at 4 °C in acid-washed polyethylene bottles during transportation to the laboratory. Dry the samples to constant weight at 105 °C and grind them to a uniform particle size. Extract the cadmium in a 1-g sample of sediment by adding the sediment and 25 mL of 0.5 M HCl to an acid-washed 100-mL polyethylene bottle and shaking for 24 h. After filtering, analyze the sample by atomic absorption spectroscopy using an air-acetylene flame, a wavelength of 228.8 nm, and a slit width of 0.5 nm. Prepare a normal calibration curve using five standards with nominal concentrations of 0.20, 0.50, 1.00, 2.00, and 3.00 ppm. Periodically check the accuracy of the calibration curve by analyzing the 1.00-ppm standard. An accuracy of $\pm 10\%$ is considered acceptable.

Although an SOP provides a written procedure, it is not necessary to follow the procedure exactly as long as we are careful to identify any modifications. On the other hand, we must follow all instructions in a **PROTOCOL FOR A SPECIFIC PURPOSE** (PSP)—the most detailed of the written quality control directives—before agencies or clients will accept our results. In many cases the required elements of a PSP are established by the agency sponsoring the analysis. For example, labs working under contract with the Environmental Protection Agency must develop a PSP that addresses such items as sampling and sample custody, frequency of calibration, schedules for the preventive maintenance of equipment and instrumentation, and management of the quality assurance program.

Two additional aspects of a quality control program deserve mention. The first is that the individuals responsible for collecting and analyzing the samples can critically examine and reject individual samples, measurements, and results. For example, when analyzing sediments for cadmium (see the SOP in Example 15.1) we might choose to screen sediment samples, discarding those containing foreign objects—such as rocks, twigs, or trash—replacing them with additional samples. If we observe a sudden change in the performance of the atomic absorption spectrometer, we may choose to reanalyze the affected samples. We may also decide to reanalyze a sample if the result of its analysis is clearly unreasonable. By identifying those samples, measurements, and results subject to gross systematic errors, inspection helps control the quality of an analysis.

Figure 7.7 in Chapter 7 shows an example of a bottom grab sampler.

The second additional consideration is the certification of an analyst's competence to perform the analysis for which he or she is responsible. Before an analyst is allowed to perform a new analytical method, he or she may be required to successfully analyze an independent check sample with acceptable accuracy and precision. The check sample is similar in composition to samples that the analyst will routinely encounter, with a concentration that is 5 to 50 times that of the method's detection limit.

15C Quality Assessment

The written directives of a quality control program are a necessary, but not a sufficient, condition for obtaining and maintaining a state of statistical control. Although quality control directives explain how we are to conduct an analysis, they do not indicate whether the system is under statistical control. This is the role of **QUALITY ASSESSMENT**, the second component of a quality assurance program.

The goals of quality assessment are to determine when an analysis has reached a state of statistical control, to detect when an analysis falls out of statistical control, and to suggest the reason(s) for this loss of statistical control. For convenience, we divide quality assessment into two categories: internal methods coordinated within the laboratory, and external methods organized and maintained by an outside agency.

15C.1 Internal Methods of Quality Assessment

The most useful methods for quality assessment are those coordinated by the laboratory, providing immediate feedback about the analytical method's state of statistical control. Internal methods of quality assessment include the analysis of duplicate samples, the analysis of blanks, the analysis of standard samples, and spike recoveries.

ANALYSIS OF DUPLICATE SAMPLES

An effective method for determining the precision of an analysis is to analyze **DUPLICATE SAMPLES**. Duplicate samples are obtained by dividing a single gross sample into two parts, although in some cases the duplicate samples are independently collected gross samples. We report the results for the duplicate samples, X_1 and X_2 , by determining the difference, d , or the relative difference, $(d)_r$, between the two samples

$$d = X_1 - X_2$$

$$(d)_r = \frac{d}{(X_1 + X_2) / 2} \times 100$$

A split sample is another name for duplicate samples created from a single gross sample.

Table 15.1 Quality Assessment Limits for the Analysis of Waters and Wastewaters

analyte	$(d)_r$ when		spike recovery limit (%)
	[analyte] < 20×MDL (±%)	[analyte] > 20×MDL (±%)	
acids	40	20	60–140
anions	25	10	80–120
bases or neutrals	40	20	70–130
carbamate pesticides	40	20	50–150
herbicides	40	20	40–160
metals	25	10	80–120
other inorganics	25	10	80–120
volatile organics	40	20	70–130

Abbreviation: MDL = method's detection limit

Source: Table 1020.I in *Standard Methods for the Analysis of Water and Wastewater*, American Public Health Association: Washington, D. C., 18th Ed., 1992.

and comparing to accepted values, such as those shown in Table 15.1 for the analysis of waters and wastewaters. Alternatively, we can estimate the standard deviation using the results for a set of n duplicates

$$s = \sqrt{\frac{\sum d_i^2}{2n}}$$

where d_i is the difference between the i th pair of duplicates. The degrees of freedom for the standard deviation is the same as the number of duplicate samples. If we combine duplicate samples from several sources, then the precision of the measurement process must be approximately the same for each.

Example 15.2

To evaluate the precision for the determination of potassium in blood serum, duplicate analyses were performed on six samples, yielding the following results in mg K/L.

duplicate	X_1	X_2
1	160	147
2	196	202
3	207	196
4	185	193
5	172	188
6	133	119

Estimate the standard deviation for the analysis.

SOLUTION

To estimate the standard deviation we first calculate the difference, d , and the squared difference, d^2 , for each duplicate. The results of these calculations are summarized in the following table.

duplicate	$d = X_1 - X_2$	d^2
1	13	169
2	-6	36
3	11	121
4	-8	64
5	-16	256
6	14	196

Finally, we calculate the standard deviation.

$$s = \sqrt{\frac{169 + 36 + 121 + 64 + 256 + 196}{2 \times 6}} = 8.4$$

Practice Exercise 15.1

To evaluate the precision of a glucometer—a device a patient uses at home to monitor his or her blood glucose level—duplicate analyses were performed on samples from five individuals, yielding the following results in mg glucose/100 mL.

duplicate	X_1	X_2
1	148.5	149.1
2	96.5	98.8
3	174.9	174.5
4	118.1	118.9
5	72.7	70.4

Estimate the standard deviation for the analysis.

Click [here](#) to review your answer to this exercise.

THE ANALYSIS OF BLANKS

We introduced the use of a blank in [Chapter 3](#) as a way to correct the signal for contributions from sources other than the analyte. The most common blank is a **METHOD BLANK** in which we take an analyte free sample through the analysis using the same reagents, glassware, and instrumentation. A method blank allows us to identify and correct systematic errors due to impurities in the reagents, contaminated glassware, and poorly calibrated instrumentation. At a minimum, a method blank is analyzed whenever we prepare a new reagent. Even better, the regular analysis of method blanks

A method blank also is called a **REAGENT BLANK**.

The contamination of reagents over time is a significant concern. The regular use of a method blank compensates for this contamination.

provides an ongoing monitoring for potential systematic errors. A new method blank is run whenever we analyze a sample with a high concentration of the analyte, because any residual carryover of analyte produces a positive determinate error.

When we collect samples in the field, additional blanks are needed to correct for potential sampling errors.² A **FIELD BLANK** is an analyte-free sample carried from the laboratory to the sampling site. At the sampling site the blank is transferred to a clean sample container, exposing it to the local environment in the process. The field blank is then preserved and transported back to the laboratory for analysis. A field blank helps identify systematic errors due to sampling, transport, and analysis. A **TRIP BLANK** is an analyte-free sample carried from the laboratory to the sampling site and back to the laboratory without being opened. A trip blank helps to identify systematic errors due to cross-contamination of volatile organic compounds during transport, handling, storage, and analysis.

ANALYSIS OF STANDARDS

Another tool for monitoring an analytical method's state of statistical control is to analyze a standard containing a known concentration of analyte. A standard reference material (SRM) is the ideal choice, provided that the SRM's matrix is similar to that of our samples. A variety of SRMs are available from the National Institute of Standards and Technology (NIST). If a suitable SRM is not available, then we can use an independently prepared synthetic sample if it is prepared from reagents of known purity. In all cases, the analyte's experimentally determined concentration in the standard must fall within predetermined limits before the analysis is considered under statistical control.

SPIKE RECOVERIES

One of the most important quality assessment tools is the recovery of a known addition, or spike, of analyte to a method blank, a field blank, or a sample. To determine a **SPIKE RECOVERY**, the blank or sample is split into two portions and a known amount of a standard solution of analyte is added to one portion. The concentration of the analyte is determined for both the spiked, F , and unspiked portions, I , and the percent recovery, $\%R$, is calculated as

$$\%R = \frac{F - I}{A} \times 100$$

where A is the concentration of analyte added to the spiked portion.

[Table 4.7](#) in Chapter 4 provides a summary of SRM 2346, a standard sample of Ginkgo biloba leaves with certified values for the concentrations of flavonoids, terpene ketones, and toxic elements, such as mercury and lead.

² Keith, L. H. *Environmental Sampling and Analysis: A Practical Guide*, Lewis Publishers: Chelsea, MI, 1991.

Example 15.3

A spike recovery for the analysis of chloride in well water was performed by adding 5.00 mL of a 25 000 ppm solution of Cl^- to a 50-mL volumetric flask and diluting to volume with the sample. An unspiked sample was prepared by adding 5.00 mL of distilled water to a separate 50-mL volumetric flask and diluting to volume with the sample. Analysis of the sample and the spiked sample return chloride concentrations of 18.3 ppm and 40.9 ppm, respectively. Determine the spike recovery.

SOLUTION

To calculate the concentration of the analyte added in the spike, we take into account the effect of dilution.

$$A = 250.0 \text{ ppm} \times \frac{5.00 \text{ mL}}{50.00 \text{ mL}} = 25.0 \text{ ppm}$$

Thus, the spike recovery is

$$\%R = \frac{40.9 - 18.3}{25.0} \times 100 = \frac{22.6}{25.0} \times 100 = 90.4\%$$

Practice Exercise 15.2

To test a glucometer, a spike recovery is carried out by measuring the amount of glucose in a sample of a patient's blood before and after spiking it with a standard solution of glucose. Before spiking the sample the glucose level is 86.7 mg/100 mL and after spiking the sample it is 110.3 mg/100 mL. The spike is prepared by adding 10.0 μL of a 25 000 mg/100mL standard to a 10.0-mL portion of the blood. What is the spike recovery for this sample.

Click [here](#) to review your answer to this exercise.

We can use spike recoveries on method blanks and field blanks to evaluate the general performance of an analytical procedure. A known concentration of analyte is added to the blank that is 5 to 50 times the method's detection limit. A systematic error during sampling and transport results in an unacceptable recovery for the field blank, but not for the method blank. A systematic error in the laboratory, however, affects the recoveries for both the field blank and the method blank.

Spike recoveries on samples are used to detect systematic errors due to the sample matrix, or to evaluate the stability of a sample after its collection. Ideally, samples are spiked in the field at a concentration that is 1 to 10 times the analyte's expected concentration or 5 to 50 times the method's detection limit, whichever is larger. If the recovery for a field spike is unacceptable, then a sample is spiked in the laboratory and analyzed immediately. If the laboratory spike's recovery is acceptable, then the poor recovery for the

[Figure 15.2](#), which we will discuss in [Section 15D](#), illustrates the use of spike recoveries as part of a quality assessment program.

field spike may be the result of the sample's deterioration during storage. If the recovery for the laboratory spike also is unacceptable, the most probable cause is a matrix-dependent relationship between the analytical signal and the analyte's concentration. In this case the sample is analyzed by the method of standard additions. Typical limits for acceptable spike recoveries for the analysis of waters and wastewaters are shown in [Table 15.1](#).

15C.2 External Methods of Quality Assessment

Internal methods of quality assessment always carry some level of suspicion because there is a potential for bias in their execution and interpretation. For this reason, external methods of quality assessment also play an important role in quality assurance programs. One external method of quality assessment is the certification of a laboratory by a sponsoring agency. Certification is based on the successful analysis of a set of **PROFICIENCY STANDARDS** prepared by the sponsoring agency. For example, laboratories involved in environmental analyses may be required to analyze standard samples prepared by the Environmental Protection Agency. A second example of an external method of quality assessment is a laboratory's voluntary participation in a collaborative test sponsored by a professional organization such as the Association of Official Analytical Chemists. Finally, an individual contracting with a laboratory can perform his or her own external quality assessment by submitting blind duplicate samples and blind standards to the laboratory for analysis. If the results for the quality assessment samples are unacceptable, then there is good reason to question the laboratory's results for other samples.

See [Chapter 14](#) for a more detailed description of collaborative testing.

15D Evaluating Quality Assurance Data

In the previous section we described several internal methods of quality assessment that provide quantitative estimates of the systematic errors and the random errors in an analytical method. Now we turn our attention to how we incorporate this quality assessment data into a complete quality assurance program. There are two general approaches to developing a quality assurance program: a prescriptive approach, in which we prescribe an exact method of quality assessment, and a performance-based approach in which we can use any form of quality assessment, provided that we can demonstrate an acceptable level of statistical control.³

15D.1 Prescriptive Approach

With a prescriptive approach to quality assessment, duplicate samples, blanks, standards, and spike recoveries are measured following a specific protocol. We compare the result for each analysis to a single predetermined limit, taking an appropriate corrective action if the limit is exceeded. Prescriptive approaches to quality assurance are common for programs and

3 Poppiti, J. *Environ. Sci. Technol.* **1994**, *28*, 151A–152A.

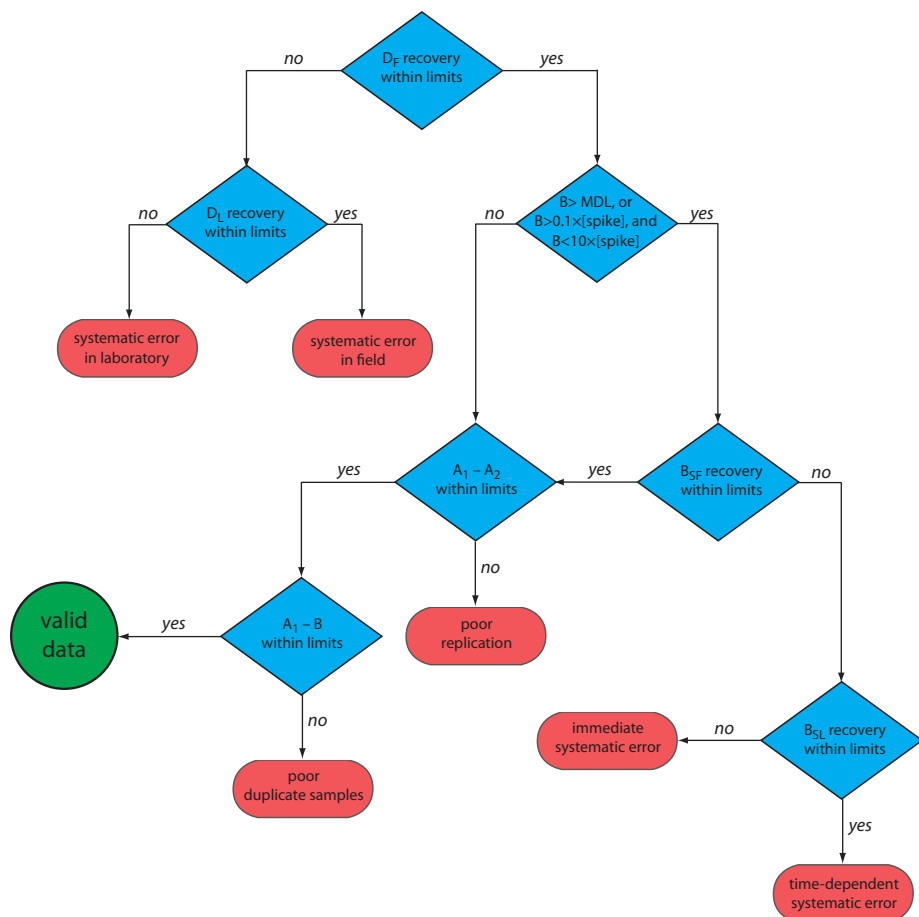


Figure 15.2 Example of a prescriptive approach to quality assurance for laboratories monitoring waters and wastewaters. Adapted from Environmental Monitoring and Support Laboratory, U. S. Environmental Protection Agency, “Handbook for Analytical Quality Control in Water and Wastewater Laboratories,” March 1979.

laboratories subject to federal regulation. For example, the Food and Drug Administration (FDA) specifies quality assurance practices that must be followed by laboratories analyzing products regulated by the FDA.

Figure 15.2 provides a typical example of a prescriptive approach to quality assessment. Two samples, A and B, are collected at the sample site. Sample A is split into two equal-volume samples, A_1 and A_2 . Sample B is also split into two equal-volume samples, one of which, B_{SF} , is spiked in the field with a known amount of analyte. A field blank, D_F , also is spiked with the same amount of analyte. All five samples (A_1 , A_2 , B, B_{SF} , and D_F) are preserved if necessary and transported to the laboratory for analysis.

After returning to the lab, the first sample that is analyzed is the field blank. If its spike recovery is unacceptable—an indication of a systematic error in the field or in the lab—then a laboratory method blank, D_L , is prepared and analyzed. If the spike recovery for the method blank is unsatisfactory, then the systematic error originated in the laboratory; this is something we can find and correct before proceeding with the analysis. An acceptable spike recovery for the method blank, however, indicates that the systematic error occurred in the field or during transport to the laboratory, casting uncertainty on the quality of the samples. The only recourse is to discard the samples and return to the field to collect new samples.

If the field blank is satisfactory, then sample B is analyzed. If the result for B is above the method's detection limit, or if it is within the range of 0.1 to 10 times the amount of analyte spiked into B_{SF} , then a spike recovery for B_{SF} is determined. An unacceptable spike recovery for B_{SF} indicates the presence of a systematic error involving the sample. To determine the source of the systematic error, a laboratory spike, B_{SL} , is prepared using sample B, and analyzed. If the spike recovery for B_{SL} is acceptable, then the systematic error requires a long time to have a noticeable effect on the spike recovery. One possible explanation is that the analyte has not been properly preserved or it has been held beyond the acceptable holding time. An unacceptable spike recovery for B_{SL} suggests an immediate systematic error, such as that due to the influence of the sample's matrix. In either case the systematic errors are fatal and must be corrected before the sample is reanalyzed.

If the spike recovery for B_{SF} is acceptable, or if the result for sample B is below the method's detection limit, or outside the range of 0.1 to 10 times the amount of analyte spiked in B_{SF} , then the duplicate samples A_1 and A_2 are analyzed. The results for A_1 and A_2 are discarded if the difference between their values is excessive. If the difference between the results for A_1 and A_2 is within the accepted limits, then the results for samples A_1 and B are compared. Because samples collected from the same sampling site at the same time should be identical in composition, the results are discarded if the difference between their values is unsatisfactory, and accepted if the difference is satisfactory.

The protocol in [Figure 15.2](#) requires four to five evaluations of quality assessment data before the result for a single sample is accepted, a process that we must repeat for each analyte and for each sample. Other prescriptive protocols are equally demanding. For example, [Figure 3.7](#) in Chapter 3 shows a portion of a quality assurance protocol for the graphite furnace atomic absorption analysis of trace metals in aqueous solutions. This protocol involves the analysis of an initial calibration verification standard and an initial calibration blank, followed by the analysis of samples in groups of ten. Each group of samples is preceded and followed by continuing calibration verification (CCV) and continuing calibration blank (CCB) quality assessment samples. Results for each group of ten samples are accepted only if both sets of CCV and CCB quality assessment samples are acceptable.

The advantage of a prescriptive approach to quality assurance is that all laboratories use a single consistent set of guideline. A significant disadvantage is that it does not take into account a laboratory's ability to produce quality results when determining the frequency of collecting and analyzing quality assessment data. A laboratory with a record of producing high quality results is forced to spend more time and money on quality assessment than is perhaps necessary. At the same time, the frequency of quality assessment may be insufficient for a laboratory with a history of producing results of poor quality.

This is one reason that environmental testing is so expensive.

15D.2 Performance-Based Approach

In a performance-based approach to quality assurance, a laboratory is free to use its experience to determine the best way to gather and monitor quality assessment data. The quality assessment methods remain the same—duplicate samples, blanks, standards, and spike recoveries—because they provide the necessary information about precision and bias. What a laboratory can control is the frequency with which it analyzes quality assessment samples and the conditions it chooses to identify when an analysis falls out of a state of statistical control.

The principal tool for performance-based quality assessment is a **CONTROL CHART**, which provides a continuous record of quality assessment results. Our fundamental assumption is that if an analysis is under statistical control, individual quality assessment results are randomly distributed around a known mean with a known standard deviation. When an analysis moves out of statistical control, the quality assessment data is influenced by additional sources of error, increasing the standard deviation or changing the mean value.

Control charts were originally developed in the 1920s as a quality assurance tool for the control of manufactured products.⁴ Although there are many types of control charts, two are common in quality assessment programs: a property control chart, in which we record single measurements or the means for several replicate measurements, and a precision control chart, in which we record ranges or standard deviations. In either case, the control chart consists of a line representing the mean value for the measured property or the precision, and two or more boundary lines whose positions are determined by the precision of the measurement process. The position of the data points about the boundary lines determines whether the analysis is in statistical control.

CONSTRUCTING A PROPERTY CONTROL CHART

The simplest property control chart is a sequence of points, each representing a single determination of the property we are monitoring. To construct the control chart, we analyze a minimum of 7–15 samples while the system is under statistical control. The center line (*CL*) of the control chart is the average of these *n* samples.

$$CL = \bar{X} = \frac{\sum X_i}{n}$$

Boundary lines around the center line are determined by the standard deviation, *S*, of the *n* points

The more samples in the original control chart, the easier it is to detect when an analysis is beginning to drift out of statistical control. Building a control chart with an initial run of 30 or more samples is not an unusual choice.

⁴ Shewhart, W. A. *Economic Control of the Quality of Manufactured Products*, Macmillan: London, 1931.

$$S = \sqrt{\frac{\sum (X_i - \bar{X})^2}{n-1}}$$

The upper and lower warning limits (*UWL* and *LWL*) and the upper and lower control limits (*UCL* and *LCL*) are given by the following equations.

$$UWL = CL + 2S \quad LWL = CL - 2S$$

$$UCL = CL + 3S \quad LCL = CL - 3S$$

Why these limits? Examine [Table 4.12](#) in Chapter 4 and consider your answer to this question. We will return to this point later in this chapter when we consider how to use a control chart.

Example 15.4

Construct a property control chart using the following spike recovery data (all values are for percentage of spike recovered).

sample:	1	2	3	4	5
result:	97.3	98.1	100.3	99.5	100.9
sample:	6	7	8	9	10
result:	98.6	96.9	99.6	101.1	100.4
sample:	11	12	13	14	15
result:	100.0	95.9	98.3	99.2	102.1
sample:	16	17	18	19	20
result:	98.5	101.7	100.4	99.1	100.3

SOLUTION

The mean and the standard deviation for the 20 data points are 99.4% and 1.6%, respectively. Using these values, we find that the *UCL* is 104.2%, the *UWL* is 102.6%, the *LWL* is 96.2%, and the *LCL* is 94.6%. To construct the control chart, we plot the data points sequentially and draw horizontal lines for the center line and the four boundary lines. The resulting property control chart is shown in [Figure 15.3](#).

Practice Exercise 15.3

A control chart is a useful method for monitoring a glucometer's performance over time. One approach is to use the glucometer to measure the glucose level of a standard solution. An initial analysis of the standard yields a mean value of 249.4 mg/100 mL and a standard deviation of 2.5 mg/100 mL. An analysis of the standard over 20 consecutive days gives the following results.

day:	1	2	3	4	5	6	7	8	9	10
result:	248.1	246.0	247.9	249.4	250.9	249.7	250.2	250.3	247.3	245.6
day:	11	12	13	14	15	16	17	18	19	20
result:	246.2	250.8	249.0	254.3	246.1	250.8	248.1	246.7	253.5	251.0

Construct a control chart and evaluate the glucometer's performance.

Click [here](#) to review your answer to this exercise.

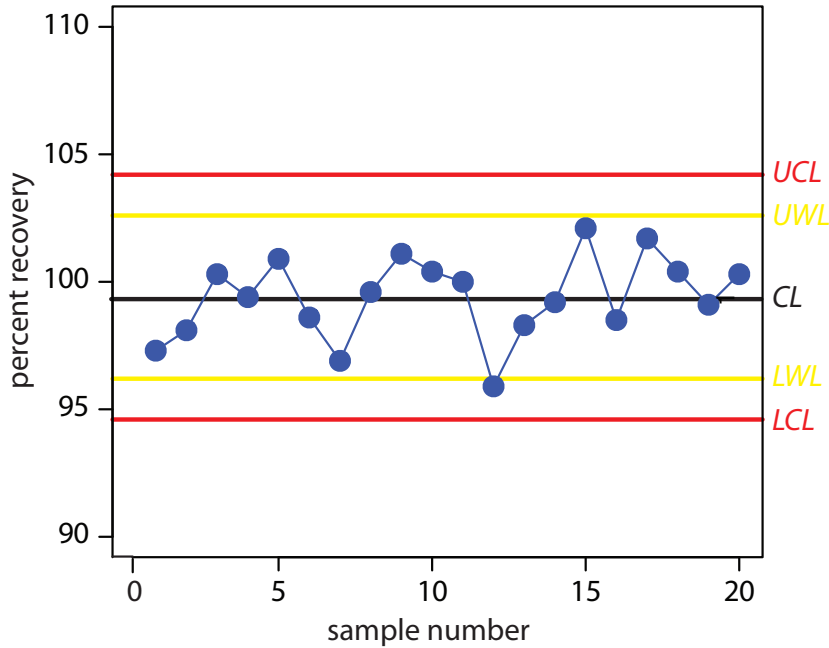


Figure 15.3 Property control chart for [Example 15.4](#). The warning limits are shown in yellow and the control limits in red.

We also can construct a control chart using the means for a set of replicate determinations on each sample. The mean for the i th sample is

$$\bar{X}_i = \frac{\sum_j X_{ij}}{n_{\text{rep}}}$$

where X_{ij} is the j th replicate and n_{rep} is the number of replicate determinations for each sample. The control chart's center line is

$$CL = \frac{\sum \bar{X}_i}{n}$$

where n is the number of samples used in constructing the control chart. To determine the standard deviation for the warning limits and the control limits, we first calculate the variance for each sample.

$$s_i^2 = \frac{\sum_j (X_{ij} - \bar{X}_i)^2}{n_{\text{rep}} - 1}$$

The overall standard deviation, S , is the square root of the average variance for the samples used in constructing the control plot.

$$S = \sqrt{\frac{\sum s_i^2}{n}}$$

When using means to construct a property control chart, all samples must have the same number of replicates.

Table 15.2 Statistical Factors for the Upper Warning Limit and the Upper Control Limit of a Precision Control Chart

replicates	f_{UWL}	f_{UCL}
2	2.512	3.267
3	2.050	2.575
4	1.855	2.282
5	1.743	2.115
6	1.669	2.004

The resulting warning and control limits are given by the following four equations.

$$UWL = CL + \frac{2S}{\sqrt{n_{\text{rep}}}} \quad LWL = CL - \frac{2S}{\sqrt{n_{\text{rep}}}}$$

$$UCL = CL + \frac{3S}{\sqrt{n_{\text{rep}}}} \quad LCL = CL - \frac{3S}{\sqrt{n_{\text{rep}}}}$$

CONSTRUCTING A PRECISION CONTROL CHART

A precision control chart shows how the precision of an analysis changes over time. The most common measure of precision is the range, R , between the largest and the smallest results for n_{rep} analyses on a sample.

$$R = X_{\text{largest}} - X_{\text{smallest}}$$

To construct the control chart, we analyze a minimum of 15–20 samples while the system is under statistical control. The center line (CL) of the control chart is the average range of these n samples.

$$\bar{R} = \frac{\sum R_i}{n}$$

The upper warning line and the upper control line are given by the following equations

$$UWL = f_{UWL} \times \bar{R}$$

$$UCL = f_{UCL} \times \bar{R}$$

where f_{UWL} and f_{UCL} are statistical factors determined by the number of replicates used in determining the range. Table 15.2 provides representative values for f_{UWL} and f_{UCL} . Because the range is greater than or equal to zero, there is no lower control limit or lower warning limit.

The more samples in the original control chart, the easier it is to detect when an analysis is beginning to drift out of statistical control. Building a control chart with an initial run of 30 or more samples is not an unusual choice.

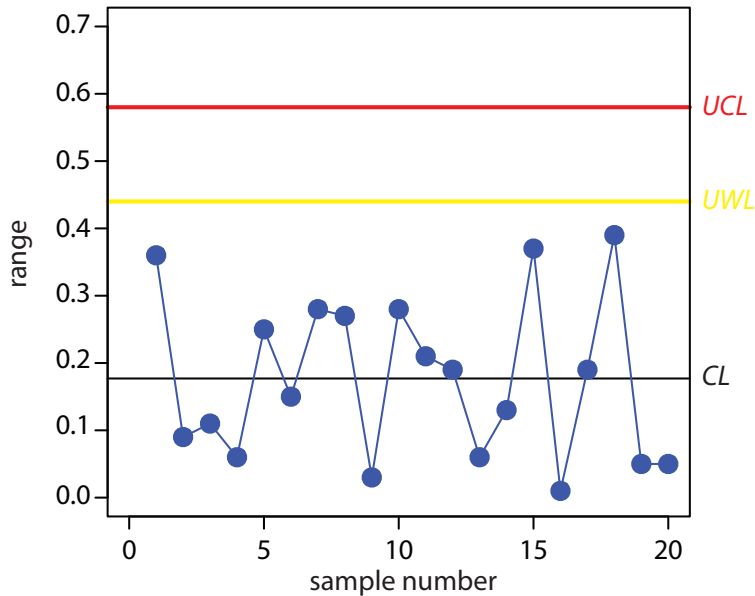


Figure 15.4 Precision control chart for Example 15.5. The warning limits are shown in yellow and the control limits in red.

Example 15.5

Construct a precision control chart using the following ranges, each determined from a duplicate analysis of a 10.0-ppm calibration standard.

sample:	1	2	3	4	5
result:	0.36	0.09	0.11	0.06	0.25
sample:	6	7	8	9	10
result:	0.15	0.28	0.27	0.03	0.28
sample:	11	12	13	14	15
result:	0.21	0.19	0.06	0.13	0.37
sample:	16	17	18	19	20
result:	0.01	0.19	0.39	0.05	0.05

SOLUTION

The average range for the duplicate samples is 0.177. Because two replicates were used for each point the *UWL* and *UCL* are

$$UWL = 2.512 \times 0.177 = 0.44$$

$$UCL = 3.267 \times 0.177 = 0.58$$

The resulting property control chart is shown in Figure 15.4.

The precision control chart in Figure 15.4 is strictly valid only for the replicate analysis of identical samples, such as a calibration standard or a standard reference material. Its use for the analysis of nonidentical samples—as often is the case in clinical analyses and environmental analyses—is complicated by the fact that the range usually is not independent of the magnitude of the measurements. For example, [Table 15.3](#) shows the

Table 15.3 Average Range for the Concentration of Chromium in Duplicate Water Samples

[Cr] (ppb)	number of duplicate samples	\bar{R}
5 to < 10	32	0.32
10 to < 25	15	0.57
25 to < 50	16	1.12
50 to < 150	15	3.80
150 to < 500	8	5.25
> 500	5	76.0

Source: Environmental Monitoring and Support Laboratory, U. S. Environmental Protection Agency, "Handbook for Analytical Quality Control in Water and Wastewater Laboratories," March 1979.

relationship between the average range and the concentration of chromium in 91 water samples. The significant difference in the average range for different concentrations of chromium makes a single precision control chart impossible. As shown in figure 15.5, one solution is to prepare separate precision control charts, each of which covers a range of concentrations for which \bar{R} is approximately constant.

INTERPRETING CONTROL CHARTS

The purpose of a control chart is to determine if an analysis is in a state of statistical control. We make this determination by examining the location

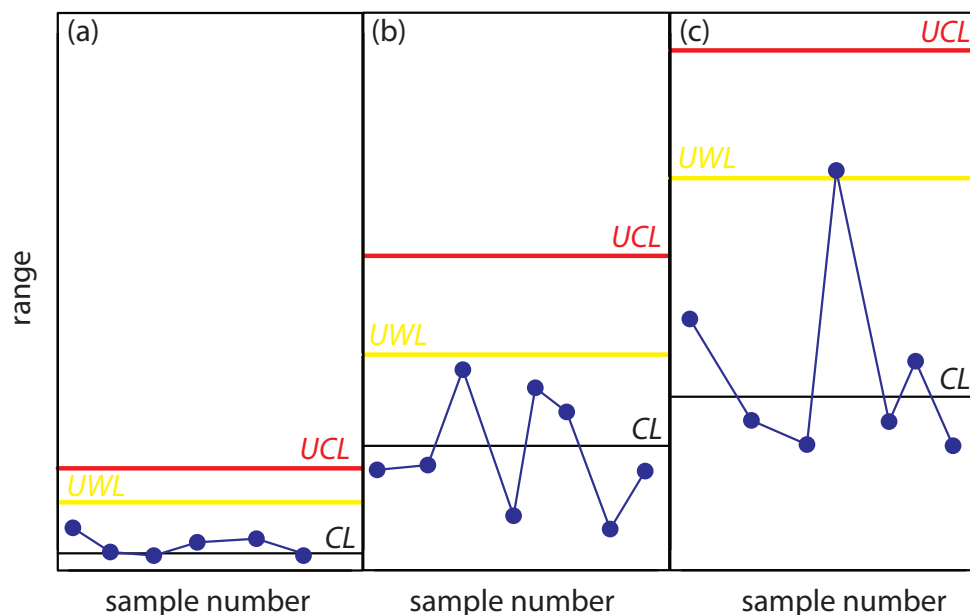


Figure 15.5 Example showing the use of a precision control chart for samples that span a range of analyte concentrations. The precision control charts are for (a) low concentrations of analyte; (b) intermediate concentrations of analyte; and (c) high concentrations of analyte.

of individual results relative to the warning limits and the control limits, and by examining the distribution of results around the central line. If we assume that the individual results are normally distributed, then the probability of finding a point at any distance from the control limit is determined by the properties of a normal distribution.⁵ We set the upper and lower control limits for a property control chart to $CL \pm 3S$ because 99.74% of a normally distributed population is within three standard deviations of the population's mean. This means that there is only a 0.26% probability of obtaining a result larger than the *UCL* or smaller than the *LCL*. When a result exceeds a control limit, the most likely explanation is a systematic error in the analysis or a loss of precision. In either case, we assume that the analysis no longer is in a state of statistical control.

Rule 1. An analysis is no longer under statistical control if any single point exceeds either the *UCL* or the *LCL*.

By setting the upper and lower warning limits to $CL \pm 2S$, we expect that no more than 5% of the results will exceed one of these limits; thus

Rule 2. An analysis is no longer under statistical control if two out of three consecutive points are between the *UWL* and the *UCL* or between the *LWL* and the *LCL*.

If an analysis is under statistical control, then we expect a random distribution of results about the center line. The presence of an unlikely pattern in the data is another indication that the analysis is no longer under statistical control.

Rule 3. An analysis is no longer under statistical control if seven consecutive results fall completely above or completely below the center line.

Rule 4. An analysis is no longer under statistical control if six consecutive results increase or decrease in value.

Rule 5. An analysis is no longer under statistical control if 14 consecutive alternate up and down in value.

Rule 6. An analysis is no longer under statistical control if there is any obvious nonrandom pattern to the results.

Figure 15.6 shows three examples of control charts in which the results show an analysis that has fallen out of statistical control. The same rules apply to precision control charts with the exception that there are no lower warning limits and lower control limits.

USING CONTROL CHARTS FOR QUALITY ASSURANCE

Control charts play an important role in a performance-based program of quality assurance because they provide an easily interpreted picture of the statistical state of an analysis. Quality assessment samples such as blanks,

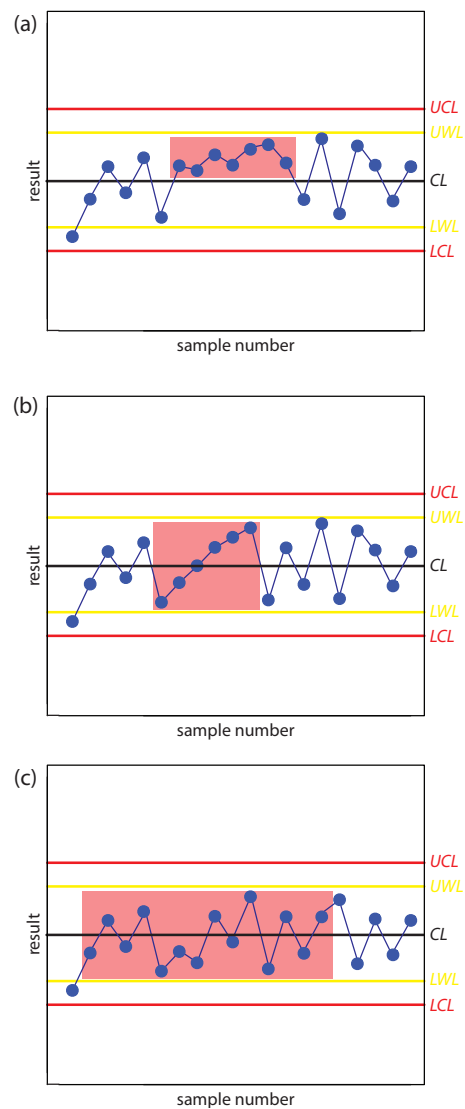


Figure 15.6 Examples of property control charts that show a sequence of results—indicated by the highlighting—that violate (a) rule 3; (b) rule 4; and (c) rule 5.

Practice Exercise 15.4

In [Practice Exercise 15.3](#) you created a property control chart for a glucometer. Examine your property control chart and evaluate the glucometer's performance. Does your conclusion change if the next three results are 255.6, 253.9, and 255.8 mg/100 mL?

Click [here](#) to review your answer to this exercise.

⁵ Mullins, E. *Analyst*, 1994, 119, 369–375.

standards, and spike recoveries are monitored with property control charts. A precision control chart is used to monitor duplicate samples.

The first step in using a control chart is to determine the mean value and the standard deviation (or range) for the property being measured while the analysis is under statistical control. These values must be established using the same conditions that will be present during subsequent analyses. Preliminary data is collected both throughout the day and over several days to account for short-term and long-term variability. An initial control chart is prepared using this preliminary data and discrepant points identified using the rules discussed in the previous section. After eliminating questionable points, the control chart is replotted. Once the control chart is in use, the original limits may be adjusted if the number of new data points is at least equivalent to the amount of data used to construct the original control chart. For example, if the original control chart includes 15 points, new limits can be calculated after collecting 15 additional points. The 30 points are pooled together to calculate the new limits. A second modification can be made after collecting an addition 30 points. Another indication that a control chart needs to be modified is when points rarely exceed the warning limits. In this case the new limits can be recalculated using the last 20 points.

Once a control chart is in use, new quality assessment data is added at a rate sufficient to ensure that the analysis remains in statistical control. As with prescriptive approaches to quality assurance, when the analysis falls out of statistical control, all samples analyzed since the last successful verification of statistical control must be reanalyzed. The advantage of a performance-based approach to quality assurance is that a laboratory may use its experience, guided by control charts, to determine the frequency for collecting quality assessment samples. When the system is stable, quality assessment samples can be acquired less frequently.

15E Key Terms

control chart	duplicate samples	field blank
good laboratory practices	good measurement practices	method blank
proficiency standard	protocol for a specific purpose	quality assessment
quality assurance program	quality control	reagent blank
spike recovery	standard operations procedure	statistical control
trip blank		

15F Summary

Few analyses are so straightforward that high quality results are easily obtained. Good analytical work requires careful planning and an attention to detail. Creating and maintaining a quality assurance program is one way

As you review this chapter, try to define a key term in your own words. Check your answer by clicking on the key term, which will take you to the page where it was first introduced. Clicking on the **KEY TERM** there, will bring you back to this page so that you can continue with another key term.

to help ensure the quality of analytical results. Quality assurance programs usually include elements of quality control and quality assessment.

Quality control encompasses all activities used to bring a system into statistical control. The most important facet of quality control is written documentation, including statements of good laboratory practices, good measurement practices, standard operating procedures, and protocols for a specific purpose.

Quality assessment includes the statistical tools used to determine whether an analysis is in a state of statistical control, and, if possible, to suggest why an analysis has drifted out of statistical control. Among the tools included in quality assessment are the analysis of duplicate samples, the analysis of blanks, the analysis of standards, and the analysis of spike recoveries.

Another important quality assessment tool, which provides an ongoing evaluation of an analysis, is a control chart. A control chart plots a property, such as a spike recovery, as a function of time. Results exceeding warning and control limits, or unusual patterns of data indicate that an analysis is no longer under statistical control.

15G Problems

1. Make a list of good laboratory practices for the lab accompanying this course, or another lab if this course does not have an associated laboratory. Explain the rationale for each item on your list.
2. Write directives outlining good measurement practices for a buret, a pH meter, and a spectrophotometer.
3. A atomic absorption method for the analysis of lead in an industrial wastewater has a method detection limit of 10 ppb. The relationship between the absorbance and the concentration of lead, as determined from a calibration curve, is

$$A = 0.349 \times (\text{ppm Pb})$$

Analysis of a sample in duplicate gives absorbance values of 0.554 and 0.516. Is the precision between these two duplicates acceptable based on the limits in [Table 15.1](#)?

4. The following data were obtained for the duplicate analysis of a 5.00 ppm NO_3^- standard.

sample	X1 (ppm)	X2 (ppm)
1	5.02	4.90
2	5.10	5.18
3	5.07	4.95

4	4.96	5.01
5	4.88	4.98
6	5.04	4.97

Calculate the standard deviation for these duplicate samples. If the maximum limit for the relative standard deviation is 1.5%, are these results acceptable?

- Gonzalez and colleagues developed a voltammetric method for the determination of *tert*-butylhydroxyanisole (BHA) in chewing gum.⁶ Analysis of a commercial chewing gum gave results of 0.20 mg/g. To evaluate the accuracy of their results, they performed five spike recoveries, adding an amount of BHA equivalent to 0.135 mg/g to each sample. The experimentally determined concentrations of BHA in these samples were reported as 0.342, 0.340, 0.340, 0.324, and 0.322 mg/g. Determine the percent recovery for each sample and the average percent recovery.
- A sample is analyzed following the protocol shown in [Figure 15.2](#), using a method with a detection limit of 0.05 ppm. The relationship between the analytical signal, S_{meas} , and the concentration of the analyte, C_A , as determined from a calibration curve, is

$$S_{\text{meas}} = 0.273 \times (\text{ppm analyte})$$

Answer the following questions if the limit for a successful spike recovery is $\pm 10\%$.

- A field blank is spiked with the analyte to a concentration of 2.00 ppm and returned to the lab. Analysis of the spiked field blank gives a signal of 0.573. Is the spike recovery for the field blank acceptable?
- The analysis of a spiked field blank is unacceptable. To determine the source of the problem, a spiked method blank is prepared by spiking distilled water with the analyte to a concentration of 2.00 ppm. Analysis of the spiked method blank gives a signal of 0.464. Is the source of the problem in the laboratory or in the field?
- The analysis for a spiked field sample, B_{SF} , is unacceptable. To determine the source of the problem, the sample was spiked in the laboratory by adding sufficient analyte to increase the concentration by 2.00 ppm. Analysis of the sample before and after the spike gives signals of 0.456 for B and 1.03 for B_{SL} . Considering this data, what is the most likely source of the systematic error?

⁶ Gonzalez, A.; Ruiz, M. A.; Yanez-Sedeno, P.; Pingarron, J. M. *Anal. Chim. Acta* **1994**, *285*, 63–71.

7. The following data were obtained for the repetitive analysis of a stable standard.⁷

sample	X_i (ppm)	sample	X_i (ppm)	sample	X_i (ppm)
1	35.1	10	35.0	18	36.4
2	33.2	11	31.4	19	32.1
3	33.7	12	35.6	20	38.2
4	35.9	13	30.2	21	33.1
5	34.5	14	31.1	22	36.2
6	34.5	15	31.1	23	36.2
7	34.4	16	34.8	24	34.0
8	34.3	17	34.3	25	33.8
9	31.8				

Construct a property control chart for these data and evaluate the state of statistical control.

8. The following data were obtained for the repetitive spike recoveries of field samples.⁸

sample	% recovery	sample	% recovery	sample	% recovery
1	94.6	10	104.6	18	104.6
2	93.1	11	123.8	19	91.5
3	100.0	12	93.8	20	83.1
4	122.3	13	80.0	21	100.8
5	120.8	14	99.2	22	123.1
6	93.1	15	101.5	23	96.2
7	117.7	16	74.6	24	96.9
8	96.2	17	108.5	25	102.3
9	73.8				

Construct a property control chart for these data and evaluate the state of statistical control.

9. The following data were obtained for the duplicate analysis of a stable standard.⁹

sample	X_1 (ppm)	X_2 (ppm)	sample	X_1 (ppm)	X_2 (ppm)
1	50	46	14	36	36
2	37	36	15	47	45

7 *Standard Methods for the Analysis of Waters and Wastewaters*, American Public Health Association: Washington, D. C., 18th Ed., 1992. The data is from Table 1030:I.

8 *Standard Methods for the Analysis of Waters and Wastewaters*, American Public Health Association: Washington, D. C., 18th Ed., 1992. The data is from Table 1030:II.

9 *Standard Methods for the Analysis of Waters and Wastewaters*, American Public Health Association: Washington, D. C., 18th Ed., 1992. The data is from Table 1030:I.

3	22	19	16	16	20
4	17	20	17	18	21
5	32	34	18	26	22
6	46	46	19	35	36
7	26	28	20	26	25
8	26	30	21	49	51
9	61	58	22	33	32
10	44	45	23	40	38
11	40	44	24	16	13
12	36	35	25	39	42
13	29	31			

Construct a precision control chart for these data and evaluate the state of statistical control.

15H Solutions to Practice Exercises

Practice Exercise 15.1

To estimate the standard deviation we first calculate the difference, d , and the squared difference, d^2 , for each duplicate. The results of these calculations are summarized in the following table.

duplicate	$d = X_1 - X_2$	d^2
1	-0.6	0.36
2	-2.3	5.29
3	0.4	0.16
4	-0.8	0.64
5	2.3	5.29

Finally, we calculate the standard deviation.

$$s = \sqrt{\frac{0.36 + 5.29 + 0.16 + 0.64 + 5.29}{2 \times 5}} = 1.08$$

Click [here](#) to return to the chapter.

Practice Exercise 15.2

Adding a 10.0- μ L spike to a 10.0-mL sample is a 1000-fold dilution; thus, the concentration of added glucose is 25.0 mg/100 mL and the spike recovery is

$$\%R = \frac{110.3 - 86.7}{25.0} \times 100 = \frac{23.6}{25.0} \times 100 = 94.4\%$$

Click [here](#) to return to the chapter.

Practice Exercise 15.3

The *UCL* is 256.9, the *UWL* is 254.4, the *CL* is 249.4, the *LWL* is 244.4, and the *LCL* is 241.9 mg glucose/100 mL. Figure 15.7 shows the resulting property control plot.

Click [here](#) to return to the chapter.

Practice Exercise 15.4

Although the variation in the results appears to be greater for the second 10 samples, the results do not violate any of the six rules. There is no evidence in Figure 15.7 that the analysis is out of statistical control. The next three results, in which two of the three results are between the *UWL* and the *UCL*, violates the second rule. Because the analysis is no longer under statistical control, we must stop using the glucometer until we determine the source of the problem.

Click [here](#) to return to the chapter.

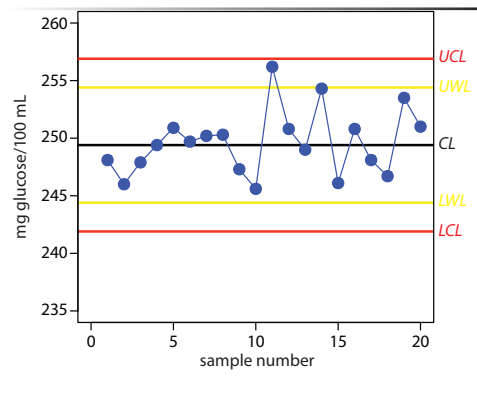


Figure 15.7 Property control plot for [Practice Exercise 15.3](#).

