
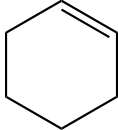


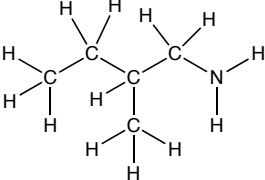
More Practice on Structures & Formulas

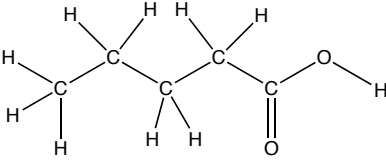
1. Redraw in the style as indicated.

(a) Draw in bond-line style: $\text{CH}_3\text{CH}_2\text{CO}_2\text{CH}_3$

(b) Draw as a condensed formula: 

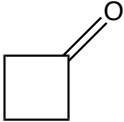
(c) Draw in expanded style: 

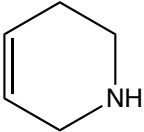
(d) Draw in bond-line style: 

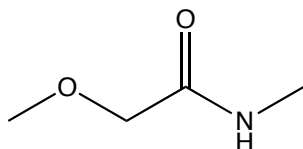
(e) Draw as a condensed formula: 

(f) Draw in expanded style: $\text{HO}(\text{CH}_2)_3\text{CHO}$

2. Circle and name the functional groups present in these molecules.

(a) 

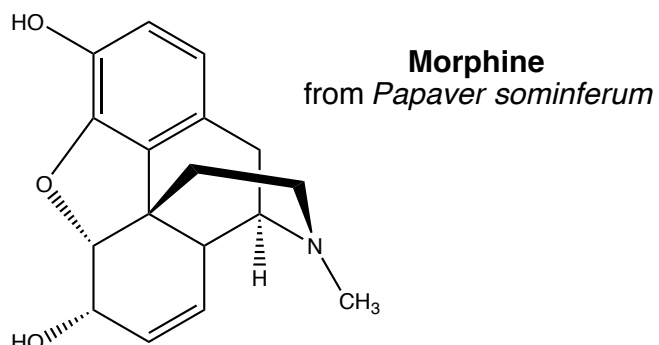
(b) 



(c)

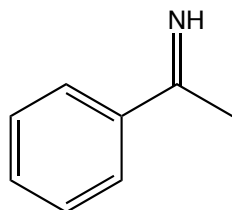
(d) CH₃CHO (you may wish to write this out in another form first)

(e) CH₃(CH₂)₂CO₂CH₃ (you may wish to write this out in another form first)

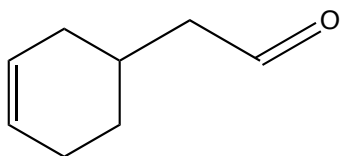


(f)

3. Give the molecular formula for each of these molecules.



(a)



(b)

(c) CH₃CC(CH₂)₄OH

4. Calculate the IHD and draw three isomers for each formula.

(a) C₄H₈O₂

(b) C_4H_7NO

(c) C_4H_9N

5. For each pair below, state whether the two representations are the same molecule, or different molecules.

