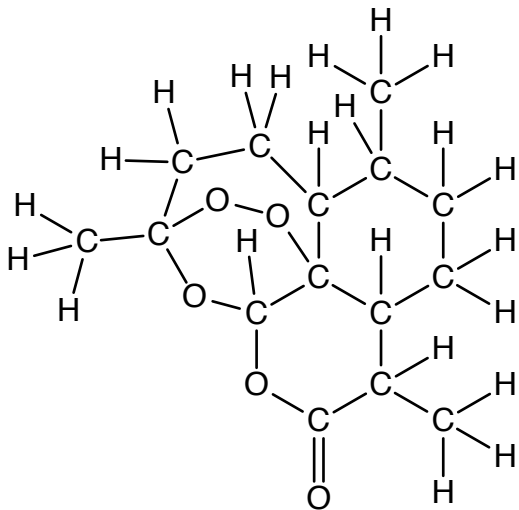
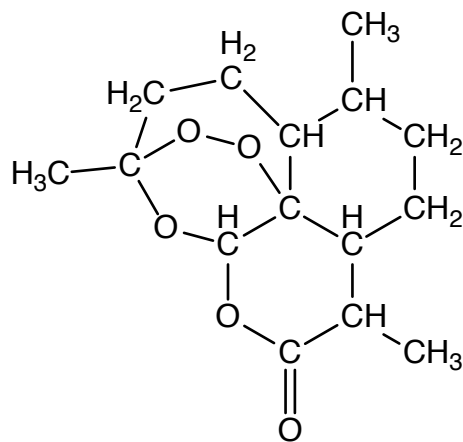


Artemisinin

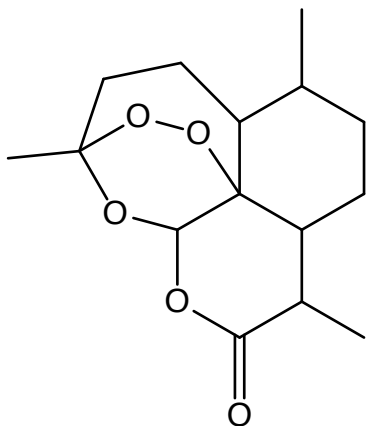
*Medicinal Plants for Poets
Prof. B. Hanson*



expanded style: every bond,
every atom is drawn



hydrogen atoms collapsed
into groups



bond-line notation: every
intersection, end of a line, change
of direction is a carbon atom,
unless otherwise indicated

This structure contains additional
information about the 3 dimensional
shape of the molecule

