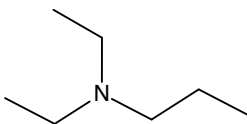


## Even More Practice on Structures & Formulas!

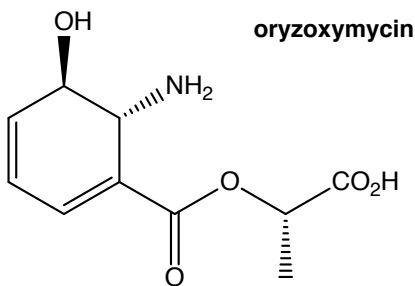
1. Redraw in the style as indicated.

(a) Draw in expanded style:  $\text{HO}_2\text{CCO}_2\text{H}$



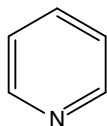
(b) Draw as a condensed formula:

2. Circle and name the functional groups present in this molecule.



3. Give the molecular formula for each of these molecules.

(a)  $\text{CH}_3\text{O}(\text{CH}_2)_2\text{O}(\text{CH}_2)_2\text{OCH}_3$



(b)

4. Calculate the IHD and draw three isomers for each formula.

(a)  $\text{C}_5\text{H}_{12}\text{O}$

(b)  $\text{C}_2\text{H}_3\text{N}$

5. For each pair below, state whether the two representations are the same molecule, or different molecules.

